

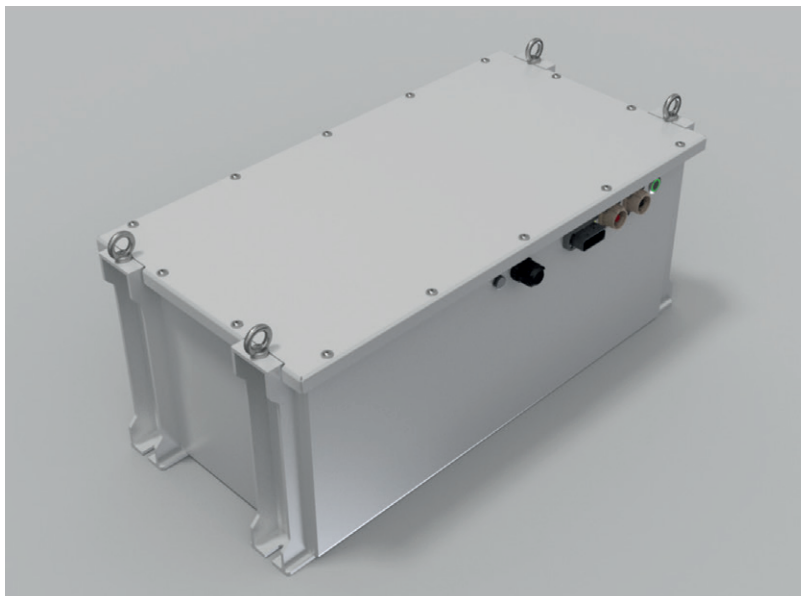
[www.midacbatteries.com](http://www.midacbatteries.com)

**Li-Ion Battery**  
Sea Power 9.2k





# Li-Ion Battery Marine



MODEL	MIDAC - SEA POWER 9.2K
TECHNOLOGY	LFP
NOMINAL ENERGY	9.2 kWh
NOMINAL VOLTAGE	51,2 Vdc
MIN - MAX VOLTAGE	43,2 - 58,4 Vdc
NOMINAL CAPACITY	180 Ah
NOMINAL DISCHARGE CURRENT @ 25°C	180 <sup>1</sup> A
MAXIMUM DISCHARGE CURRENT (30 SEC.) @25°C	390 <sup>1</sup> A
NOMINAL CHARGE CURRENT	180 <sup>1</sup> A
OPERATING TEMPERATURE DISCHARGE	-20 / 45 °C
OPERATING TEMPERATURE CHARGE	0 / 45 °C
CYCLE LIFE (0.5 / 0.5C @25°C)	> 4000 <sup>2</sup> cicli @25°C - 80% DOD e 80% capacità residua e > 6500 <sup>3</sup> a 50% DOD
WEIGHT	105
MECHANICAL DIMENSION	746 x 373 x 338 mm
PROTECTION CLASS	IP66
POWER CONNECTION	Amphenol SURLOK 2.0
HOUSING MATERIAL	Acciaio Inox
DATA CONNECTION	CANBUS
STANDARDS	EN 61000-6-2:2005 + EC:2005 + IS1:2005 EN 61000-6-2:2007 + A1:2011 EN IEC 62619:2022 UN38.3 RINA <sup>4</sup>

<sup>1</sup> The maximum current may be reduced depending on the working temperature and to be limited by the socket.

<sup>2</sup> Obtained using working cycles at @25°C, with a charge and discharge current of 0.5 C with a pause of 30 minutes between two cycles, DOD of 80% with residual capacity of 80%.

<sup>3</sup> Obtained using working cycles at @25°C, with a charge and discharge current of 0.5 C with a pause of 30 minutes between two cycles, DOD of 80% with residual capacity of 50%.

<sup>4</sup> Pending for approval.